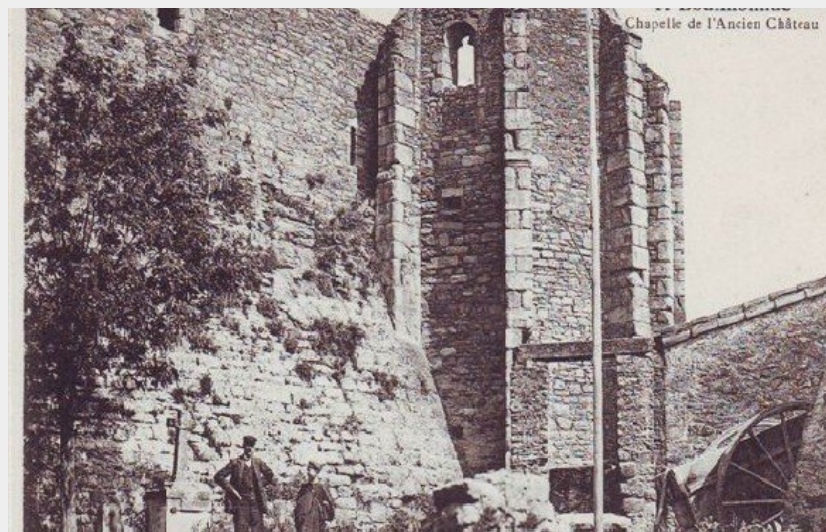
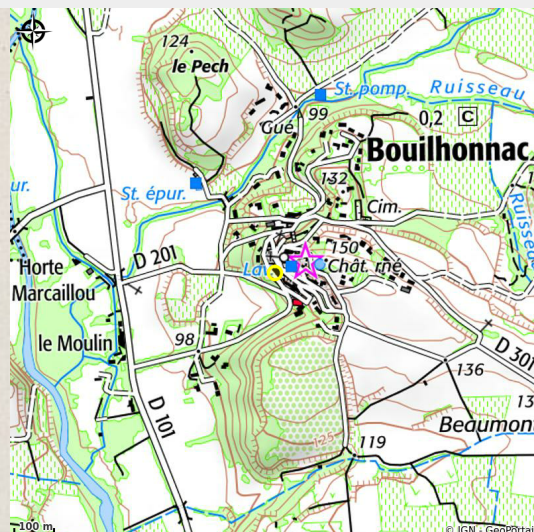


# CHATEAU DE BOUILHONNAC

Canal du midi



Attribution : CHAPELLE-BOUILHONNAC



## Useful information

Category : Attractions

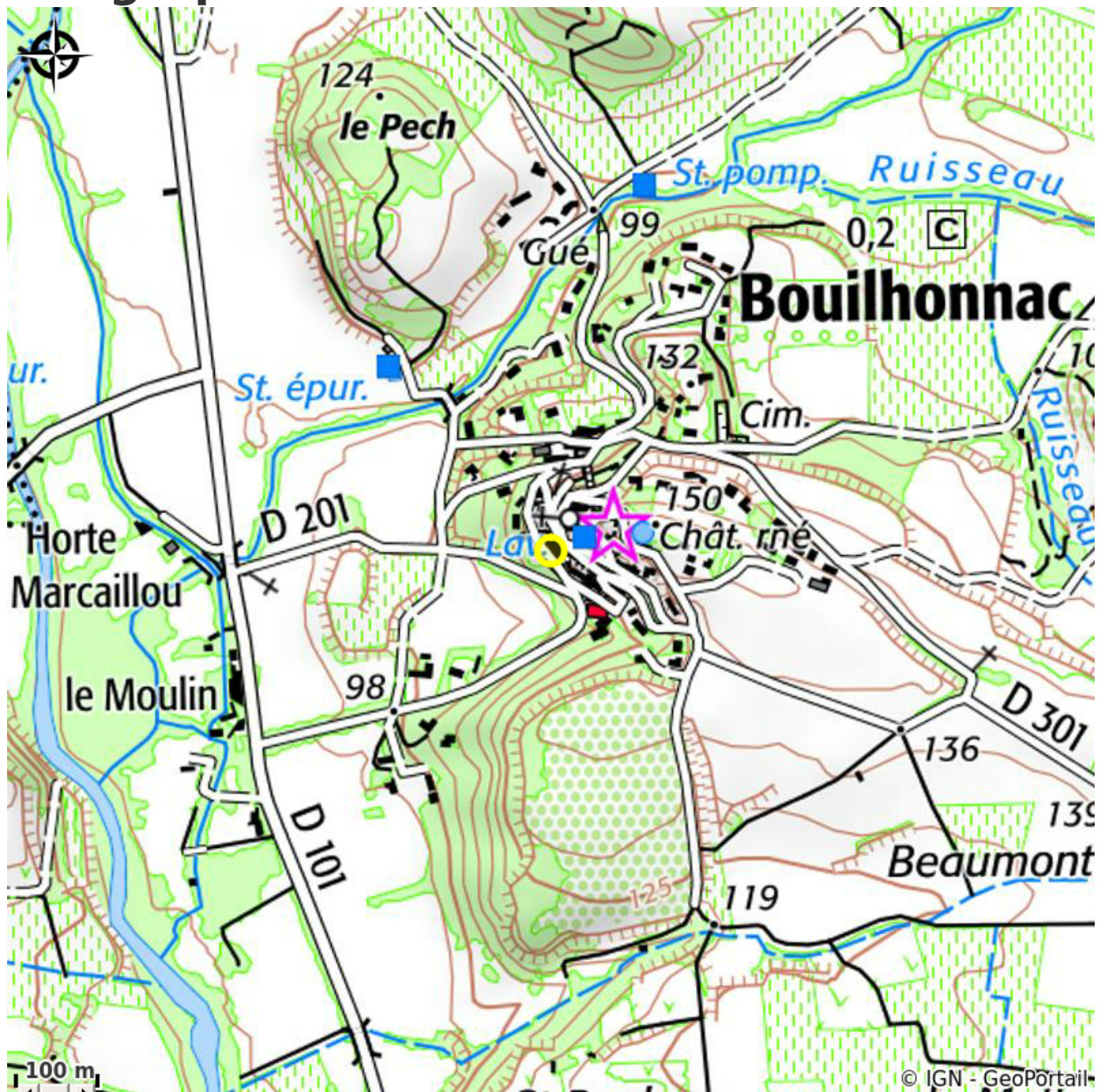
Type : Cultural attractions

# Description

Overlooking Bouilhonnac, the castle was once the property of the monks of the Abbey of Lagrasse and still boasts the remains of a 15th-century chapel which is listed as a historic monument. The castle was built at the end of the 15th century. The chapel's vaulted arches and the coat of arms above a north-east-facing doorway testify to this date. The coat of arms belongs to Pierre D'Abzac, the Archbishop of Narbonne from 1494 to 1502. The corners of the quadrangle are occupied on one side by the chapel and on the other by a large round tower. This includes an underground room separated from the ground floor by a vault with a square opening. The north-facing wall is the longest (29 m) and has a round tower in the middle. The Gothic chapel is 15.25 m long and 6 m wide. Its vaulted arches are supported by plinths decorated with the coats of arms of the de Lévis family - the family to which the famous bishop of Mirepoix belonged.



# Geographical location



# All useful information

## Contact

### Adresse :

rue du parc  
11800 BOUILHONNAC