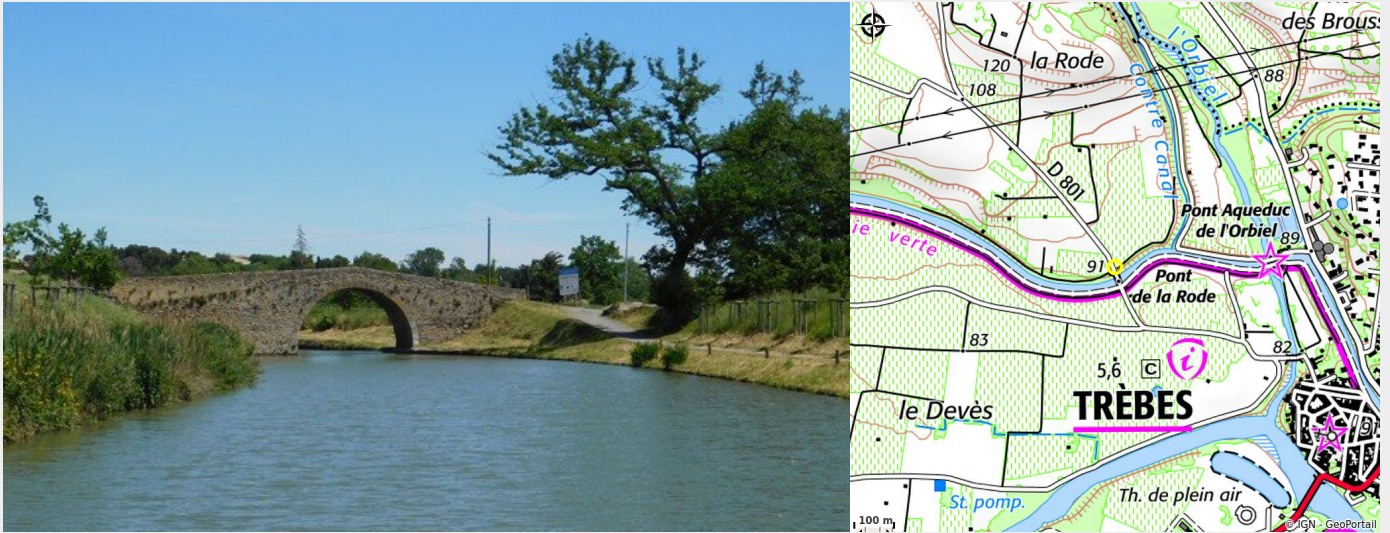


PONT DE LA RODE

Canal du midi



Attribution : Pont de La Rode

Useful information

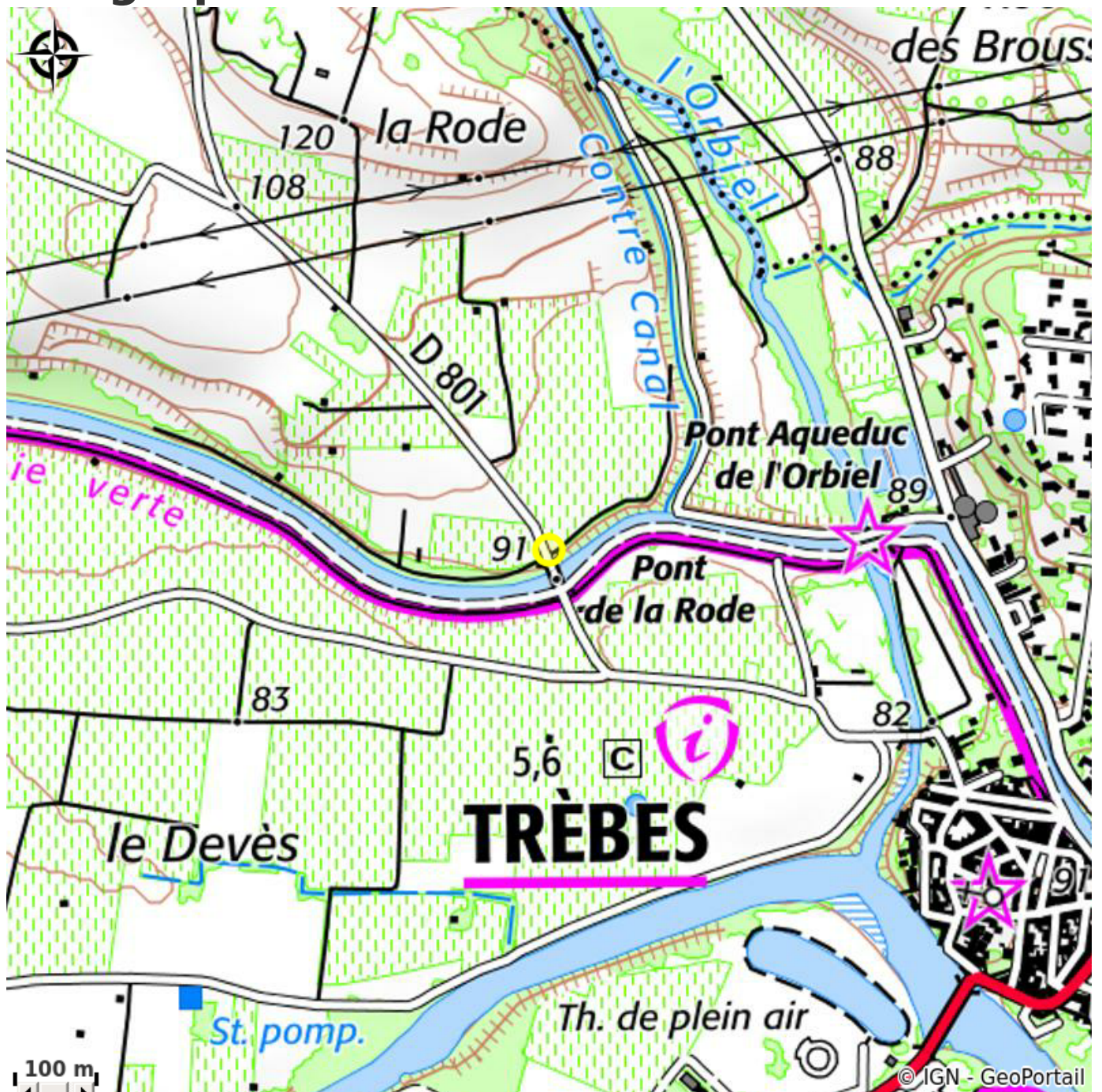
Category : Attractions

Type : Cultural attractions

Description

If you follow the towpath upstream of Trèbes, after 1,500 metres, you will reach the Pont de la Rode. This arch with very clean lines over the Canal is one of the few bridges built by Riquet which has not been altered.

Geographical location



All useful information

Contact

Adresse :

Sur le Canal du Midi
11800 TREBES