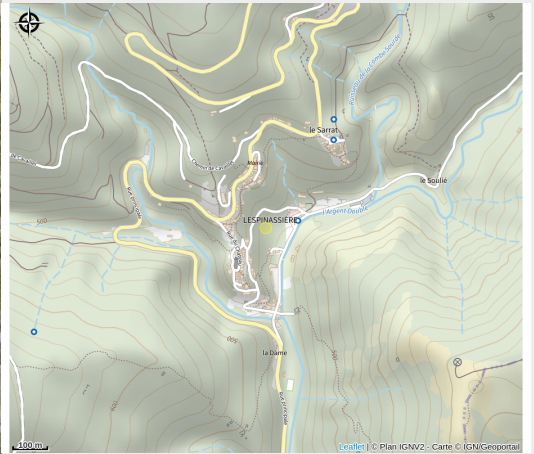


EGLISE NOTRE-DAME DE LA NATIVITE ART DECO

Montagne Noire



Attribution : EGLISE NOTRE DAME DE LA NATIVITÉ ART DECO2

Useful information

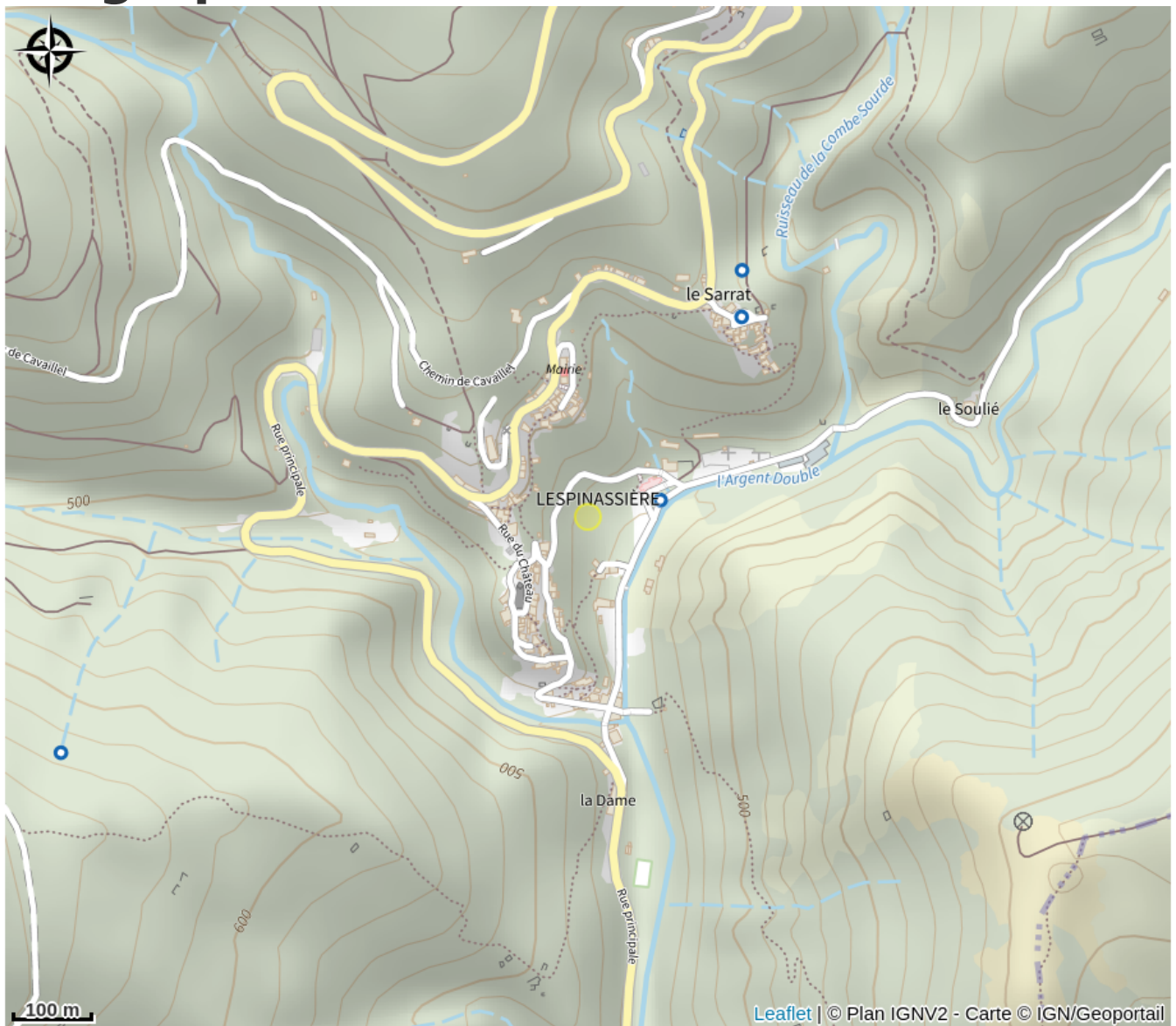
Category : Attractions

Type : Cultural attractions

Description

Lespinassière church, which was built in the 1930s by Cambiès and Reverdy, is listed as a 20th century heritage site in the Art Deco category due to its marble facings, Garrigues frescoes and Michelet sculptures. The flood in 1930 washed away the church and the cemetery. It was rebuilt and opened in 1935. The entire building is Art Deco, including the furniture and vestments, and has been listed as a 20th century heritage site. It is the only one of its kind in the south of France and probably the only one of its kind to be built from scratch during this period in France. Visits by appointment on Thursday and Sunday between 10.00 am and midday Appointments: contact the town hall on mornings when it is open

Geographical location



All useful information

Contact

Téléphone portable :

+33 6 19 43 18 81

Adresse :

11160 LESPINASSIERE

lespinassiere@free.fr